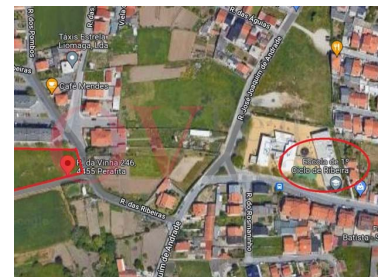
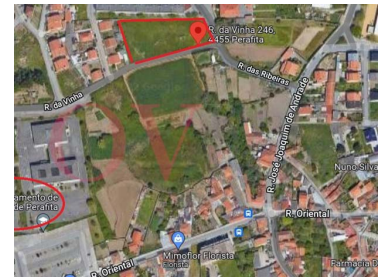
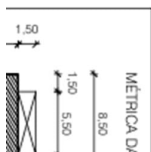
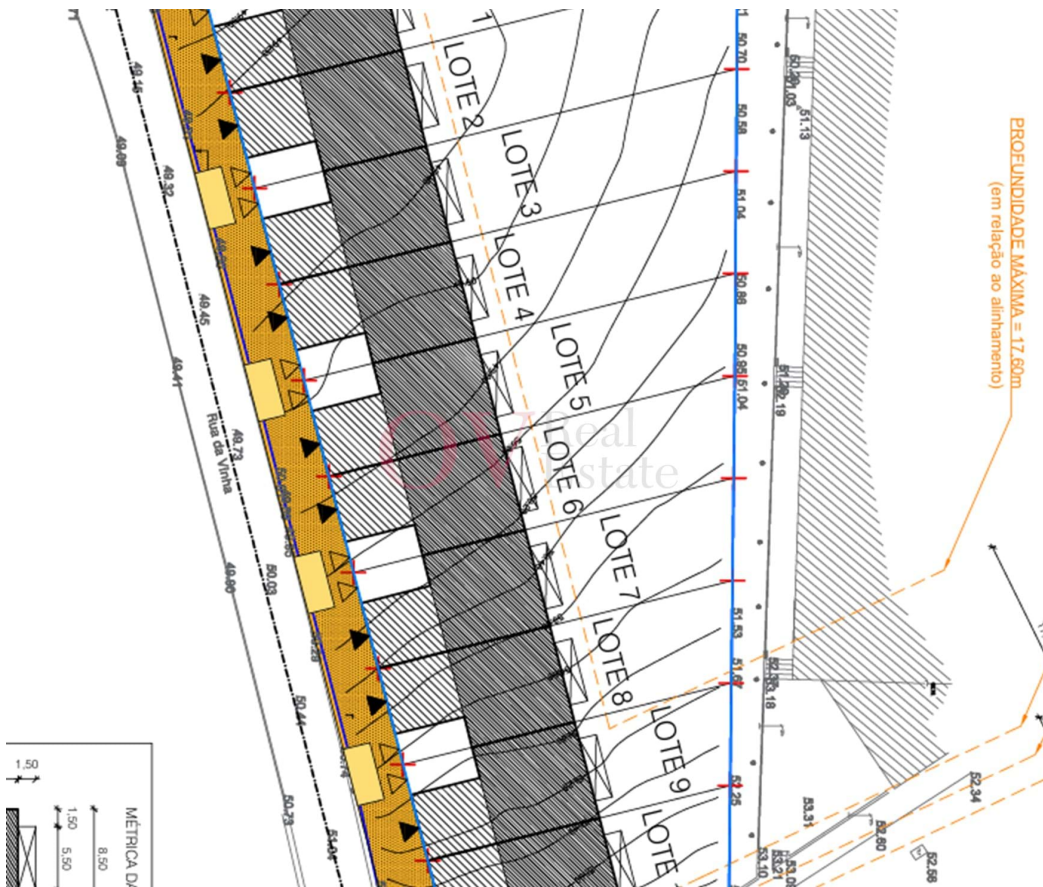




Perafita, Lavra e Santa Cruz do Bispo - Urbanised building plots



3270

Land Area (m²)

530 000 €

(EUR €)

Land with PIP approved for 10 plots construction of houses, in Perafita next to schools

Land with PIP approved for 10 plots construction of houses, in Perafita next to schools.

Land with approved PIP of 10 lots, 8 minutes from Cabo do Mundo beach, 3 minutes from the exit of the A28.

Proximity and Accessibility:

Public Transport:

Bus:

Nearby stops are about a 4-minute walk away, lines 119, 124 and 5101.

Access Routes: A28 facilitating quick travel to Matosinhos and Porto.



Odete Vasconcelos

916145002 ²

odete.vasconcelos@ovrealestate.pt

T +351 916 145 002 ² · T +351 910 589 230 ² · E geral@ovrealestate.pt

Rua Dom Nuno Álvares Pereira 290, Piso 2, Sala BH Matosinhos
AMI 20811

¹ (Call to national fixed network) | ² (Call to national mobile network)



Closeness:

- . Schools and leisure spaces
- . Supermarkets Mini Price 3 minutes
- . Pharmacies and other essential services in the vicinity.
- . A28 3 minutes
- . Rock Beach 6 minutes
- . Airport 10 minutes

This land represents an excellent investment opportunity, whether for real estate development or for the construction of your dream residence, it benefits from a strategic location and easy access to various infrastructures.

Property Features

- Proximity: Airport, Shopping, Restaurants, City, Hospital, Pharmacy, Public Transport, Schools, Public Swimming Pools, Playground
- Views: Village view, Urbanization view
- Solar orientation: North, South, East, West



Odete Vasconcelos

916145002 ²

odete.vasconcelos@ovrealestate.pt

T +351 916 145 002 ² · T +351 910 589 230 ² · E geral@ovrealestate.pt
Rua Dom Nuno Álvares Pereira 290, Piso 2, Sala BH Matosinhos
AMI 20811

¹ (Call to national fixed network) | ² (Call to national mobile network)