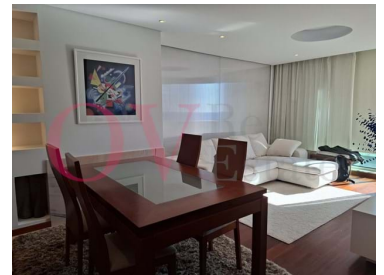




## Matosinhos e Leça da Palmeira - Apartment



**2**  
Bedrooms

**2**  
Bathrooms

**148,65**  
Area (m<sup>2</sup>)

**Garage**

**2 250 € / Month**  
(EUR €)

### 2 bedroom apartment 1st sea line in Leça da Palmeira with terrace, for rent

Would you like to live in Leça da Palmeira? On the 1st line of the sea?

We have an excellent option for you...

2 bedroom apartment 1st line of the sea in Leça da Palmeira, for rent.

This apartment has sea views in all compartments of the house, and a spectacular terrace also with a magnificent sea view.

In addition to a magnificent sea view, this apartment is rented furnished, its decoration has been done with great taste.

Features of the apartment:



**Odete Vasconcelos**

916145002 <sup>2</sup>

odete.vasconcelos@ovrealstate.pt

T +351 916 145 002 <sup>2</sup> · T +351 910 589 230 <sup>2</sup> · E geral@ovrealstate.pt

Rua Dom Nuno Álvares Pereira 290, Piso 2, Sala BH Matosinhos  
AMI 20811

<sup>1</sup> (Call to national fixed network) | <sup>2</sup> (Call to national mobile network)



## Social Zone:

- . Large living room with terrace and sea view
- . Equipped kitchen, with sea view
- . Laundry room with access to terrace

## Private area

- . Suite with full bathroom with bathtub and dressing room
- . Bedroom with built-in wardrobe.
- . Full bathroom with bathtub

This apartment has a parking space for 2 cars.

## Property Features

- Heating
- Dishwashing machine
- Equipped kitchen
- Gas central heating
- Garden
- Garage
- Built year: 2003
- Laundry
- Views: Sea views, Beach view, City view, Pool view, Urbanization view, Garden view
- Video entry system
- Double glazing
- Main drainage
- Quiet Location
- Parking space
- Energetic certification: In process
- Mains water
- Washing machine
- Fitted wardrobes
- Walk-in wardrobe
- Proximity: Airport, Beach, Shopping, Restaurants, City, Hospital, Pharmacy, Public Transport, Schools, Public Swimming Pools, Playground
- Terrace
- Furnished
- Floors: 1
- Drive way
- Frontline property
- Lift
- Electric garage gate
- Walking distance to beach
- Central location
- Uninterrupted views
- Solar orientation: South, West
- Balcony



**Odete Vasconcelos**

916145002 <sup>2</sup>

odete.vasconcelos@ovrealestate.pt

**T +351 916 145 002 <sup>2</sup> · T +351 910 589 230 <sup>2</sup> · E geral@ovrealestate.pt**  
**Rua Dom Nuno Álvares Pereira 290, Piso 2, Sala BH Matosinhos**  
**AMI 20811**

<sup>1</sup> (Call to national fixed network) | <sup>2</sup> (Call to national mobile network)